



> INTERCEPTION SYSTEMS AND ACCESSORIES

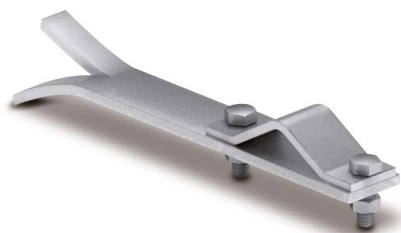
> MASTS AND ANCHORAGES

> LIGHT ANCHORAGE

1" - 1½" mast anchorage to be embedded or screwed into the wall.

The anchorages need a minimum of 60 cm between each other and at least 30 cm from the top of the wall in order to ensure correct attachment.

Single extra supports: ref. AT-031B and AT-041B, respectively.



AT-032B

Reference	Model	Dimensions (mm)	Includes	Material	Weight (kg)
AT-032B	30 cm light anchorage embedded into the wall	2 x (50 x 100 x 300)	2 supports	Galvanized steel	3.4
AT-033B	30 cm light anchorage embedded into the wall	3 x (50 x 100 x 300)	3 supports	Galvanized steel	5.1
AT-042B	30 cm light anchorage screwed into the wall	2 x (50 x 165 x 300)	2 supports	Galvanized steel	4.2
AT-043B	30 cm light anchorage screwed into the wall	3 x (50 x 165 x 300)	3 supports	Galvanized steel	6.3

Complies with UNE 21186, NF C 17-102



APPLICATION AT-032B



APPLICATION AT-042B



AT-042B